

Quick User Guide




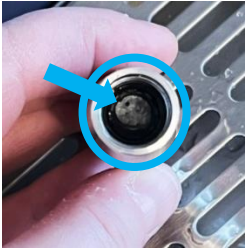





Carbotek Nitro-Dispenser - Model: ND-20-XX-02

Doc version 1.6
14.2.2024

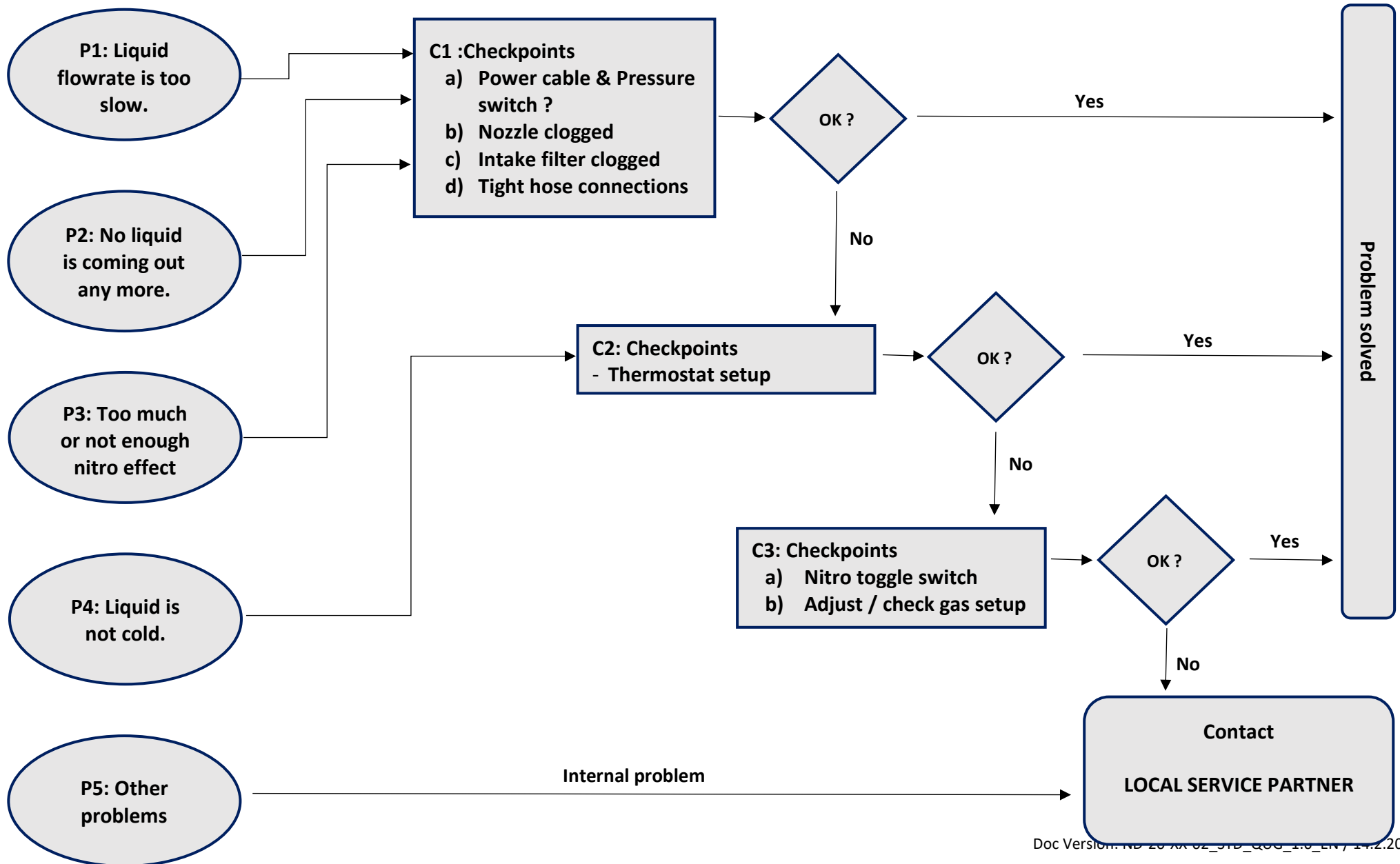
SET UP

<p>1. Scope of Supply</p> <ul style="list-style-type: none"> 1 x Nitro Dispenser 1 x 5 L canister 1 x Accessory Box <ul style="list-style-type: none"> 1 x Drip Tray 1 x Tap 1 x Tap handle 1 x Power cord 1 x Tap / Filter key 1 x Intake hose with filter 1 x URNEX One Pro detergent 1 x Operation manual 		<p>2. Place the dispenser</p> <ul style="list-style-type: none"> Place unit on a level and dry place Leave a gap of at least 3 cm on the left and right side to keep ventilation holes open. Put the drip tray in front of the dispenser and remove the foil. 	
<p>3. Connect intake hose</p> <ul style="list-style-type: none"> Push the CPC coupler into the machine socket. The filter of the intake hose must be close to the dispenser. 		<p>4. Prepare the tap / insert tap valve</p> <ul style="list-style-type: none"> Insert the tap valve into the shank and tighten it with the nut turning clockwise. 	
<p>5. Prepare the tap / attach the handle</p> <ul style="list-style-type: none"> Attach the handle Fix position with the counter screw nut. 		<p>6. Adjust correct temperature</p> <ul style="list-style-type: none"> Put the temperature dial in the front in position 7 (Max cold) for a beverage target temperature of 5°C. 	
<p>7. Prepare Canister – with water</p> <ul style="list-style-type: none"> Put 2-3 l of water in the canister Shake it a few times Connect the CPC coupler The coupler MUST click in 		<p>8. Flush the dispenser</p> <ul style="list-style-type: none"> Connect the power cable Switch ON the PRESSURE toggle switch Start flushing dispenser with water. 	
<p>9. Connect Cold-Brew</p> <ul style="list-style-type: none"> Put the Bag-In-Box or the Cold-Brew canister in its position Make sure that the coffee has been filtered with at least 100 µm or finer! Connect the CPC coupler of the intake hose. The coupler MUST click in. 		<p>10. Fill dispenser with product</p> <ul style="list-style-type: none"> Put the nitro switch on "NITRO ON" Start tapping until product is coming out of the tap. The Nitro-Dispenser is now ready to serve excellent Nitro Cold-Brew coffees. <p>Enjoy!</p>	 <p>NITRO COLD BREW</p>
			

WEEKLY CLEANING

<p>1. Prepare Canister – with water</p> <ul style="list-style-type: none"> Take a canister, flush it with water and fill in 2.0 l of water. Before connecting to the dispenser, shake it to ensure that all internal spots are rinsed. Connect canister to the ball-lock coupler 		<p>2. Flush the dispenser – with water</p> <ul style="list-style-type: none"> Open the tap and flush about 2.0 l of water through the dispenser. 	
<p>3. Check intake filter</p> <ul style="list-style-type: none"> Take the intake filter key and open the intake filter. Some ml of water will spill out. Take out the filter screen and remove particles or sediments under the water tap. 		<p>4. Check tap nozzle</p> <ul style="list-style-type: none"> Unscrew the tap nozzle part by hand Check the inlet (upper area) for particles. Flush those with tap water or use a brush if required. Then put the nozzle back on the dispenser 	
<p>5. Prepare Canister – with URNEX One Pro detergent</p> <ul style="list-style-type: none"> <u>Wear gloves and safety glasses when using chemicals.</u> Recommended detergent is: URNEX One-pro Prepare cleaning solution with warm water (2.5l) and two teaspoons (11g) of detergent. Shake it Connect canister to the CPC coupler 		<p>6. Flush the dispenser with detergent</p> <ul style="list-style-type: none"> Open the tap and flush 2.5 l of the detergent through the dispenser Wait 10-15 min Flush the rest of the detergent through the dispenser 	
<p>7. Prepare Canister – with water</p> <ul style="list-style-type: none"> Take the canister, flush it with water and fill in 2.0 l of water. Shake it Connect canister to the ball-lock coupler 		<p>8. Flush the dispenser – with water</p> <ul style="list-style-type: none"> Open the tap and flush about 2.0 l of water through the dispenser. 	
<p>9. Take the water out</p> <p>If you want to continue with product dispense:</p> <ul style="list-style-type: none"> - Tap 1.5 l (50 oz) of water through the dispenser. - Now connect back to your dispensing product <p>If you want to take the dispenser out of service:</p> <ul style="list-style-type: none"> - Keep tap open until canister is empty and air is coming through the tap nozzle 		<h1 style="font-size: 2em;">Thank you</h1>	

NITRO-DISPENSER - TROUBLESHOOTING GUIDE



Problems / Checkpoint - Explanation

Problems	
P1	<p>Liquid flowrate is too slow.</p> <p>The standard flowrate should be 0.6 l/min (fast dispense nozzle has 1.2 l/min) With a tolerance of +/- 10% to the mentioned flowrates.</p>
P2	<p>No liquid is coming out any more.</p> <p>No dispense happens at all, by opening the tap.</p>
P3	Too much or not enough nitro effect
P4	<p>Liquid is not cold</p> <p>If the dispense temperature is not right, this can be adjusted but might also be circumstance related.</p>
P5	<p>Other problems</p> <p>Things we have experienced so far:</p> <ul style="list-style-type: none"> a) Air compressor does not stop b) Air compressor is starting every few minutes or even seconds c) Leaking d) Pump is not sucking product any more

Checkpoints	
C1	Checking the parts in the dispenser where a flowrate restriction / blockage might occur.
a) Power Cable & Pressure switch	<p>Check if the lateral toggle switch is in ON position, the dispenser is connected to the power net and the power supply is on.</p> <p style="text-align: right;">→ see Quick-User Guide / SETUP / No 8</p>
b) Nozzle clogged	<p>Unscrew the Nozzle and try to dispense again.</p> <p>The flowrate without nozzle should be around 1.5 l/min.</p> <p>Check if there are debris / particles in the Nozzle top area. If yes, rinse them out under the water tap. Do NOT yet put the Nozzle back on the dispenser and continue with the checkpoints below.</p> <p style="text-align: right;">→ see Quick-User Guide / CLEANING / No 4</p>
c) Intake filter	<p>Unscrew the intake filter and check if there are debris / particles on the 200 mesh (100 micron particle filter) filter screen. If yes, rinse them away under the water tap.</p> <p style="text-align: right;">→ see Quick-User Guide / CLEANING / No 3</p>
d) Tight hose connections	<p>Make sure that the dispenser is not sucking in air. There MUST be no gas bubbles entering the dispenser through the intake hose. If you see gas bubbles during dispense, most likely there is a loose push-in hose connection.</p>
C2	Checking temperature related settings that can also result in liquid freezing
Thermostat setup	<p>There is a target temperature of 5°C when the temperature dial on the front is turned clockwise on 7 (max). Depending on the coffee inlet temperature it might take 3-5 min until the target temperature is reached. Putting the dial on 1 is +12°C higher than on 7. So every step on the front dial is a delta of about 2°C.</p> <p>In peak (nonstop) dispense situations, where the cooling compressor has no time to recover, the delta temperature between inlet and outlet is about 7°C at a flowrate of 0.6 lpm.</p> <p style="text-align: right;">→ see Quick-User Guide / SETUP / No 6</p>
C3	Checking gas flow settings
Nitro toggle switch	<p>If your dispenser has a toggle switch beside the tap, check in both positions (ON and OFF) if there is a nitro effect coming.</p> <p style="text-align: right;">→ see Quick-User Guide / SETUP / No 10</p>